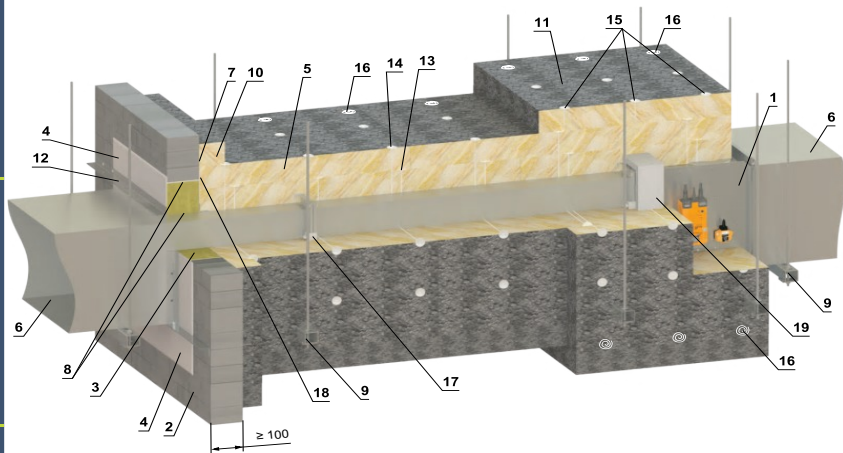
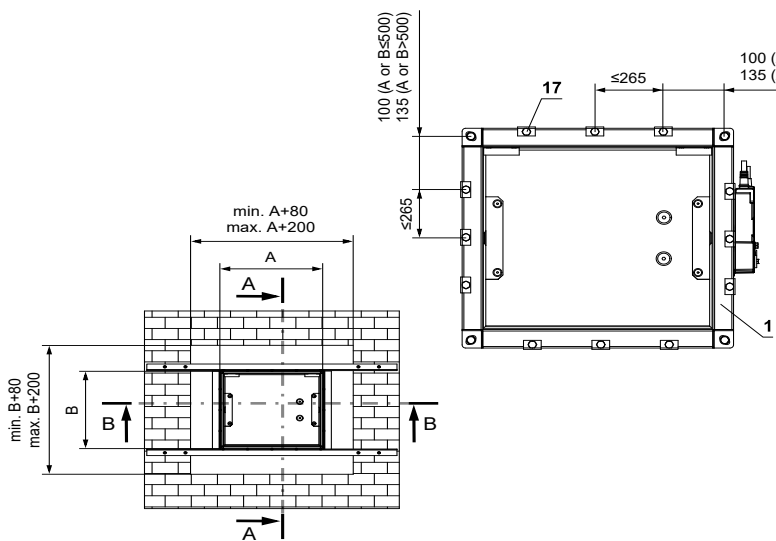


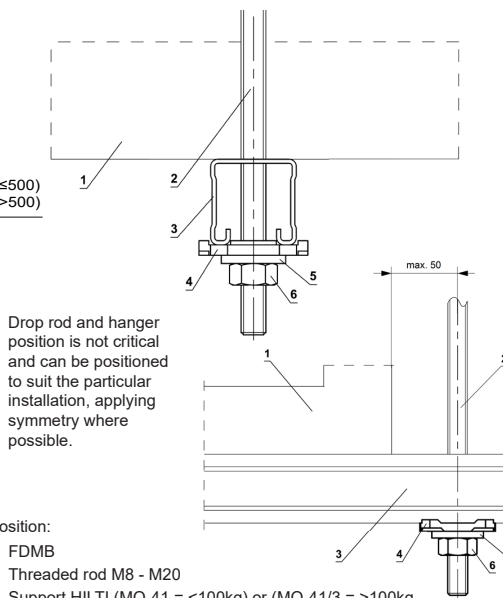
FDMB EI 90 S (Remote from solid wall construction) - For full installation requirements see product TPM



- Minimum and maximum distance between the wall and fire damper when installation remote from the wall is unlimited.
- When installing the insulation, follow the ISOVER manufacturer's instructions.
- The dampers and duct must be suspended separately.
- The duct must be suspended on both sides of damper after national rules.
- Duct between fire damper and fire separating construction must be suspended by using threaded rods and mounting profiles, or another anchoring system according national standards.
- The dampers inspection holes are covered by insulation and therefore it's necessary to make an inspection hole on the connecting duct.
- Load the suspension system depend on weight of the fire damper and duct system
- Max. length between two suspension systems is 1500 mm.
- Damper assembly procedures must be done so as all load transfer from the fire separating constructions to the damper body is absolutely excluded.
- If the threaded rod is located inside the duct insulation, distance between threaded rod and duct is max 30 mm.
- If the threaded rod is located outside the duct isolation, distance between threaded rod and isolation is max. 40 mm.
- The insulation boards are fastened to the duct.
- Reinforcing frame VRM2-B must be used for this kind of installation always. VRM2-B is not a part of the Fire damper and must be ordered separately for each installation case!

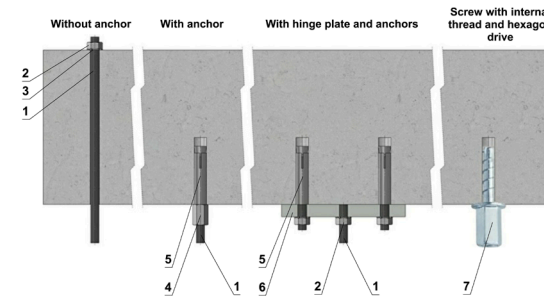


- 1 FDMB
- 2 Gypsum wall construction
- 3 Ablative Coated Batt (e.g. Firestop Board HILTI CFS-CT B 1S 140/50 - min. density 140 kg/m³ + Firestop acrylic sealant HILTI CFS-S ACR or equivalent)
- 4 Fire stop coating thickness 1 mm (e.g. HILTI CFS-CT, PROMASTOP-CC or equivalent)
- 5 Insulation board made of stone wool, with a surface treatment of aluminum foil, min. density 66 kg/m³ (ISOVER Ultimate Protect SLAB 4.0 Alu1, th. 60 mm)
- 6 Standard air ducts, made of galvanized sheet thickness 0,8 mm, flanges 30 mm, acc. to EN 1507 and DIN 24190
- 7 ISOVER Protect BSK glue - apply on the insulation and stick it to the fire separation construction
- 8 Fire resistant mastic - fill the gap on both sides of the fire separation construction and around the perimeter of penetration and damper body. (e.g. HILTI CFS-S ACR)
- 9 Fixing profile with threaded rod
- 10 Duct penetration insulation collar - ISOVER Ultimate Protect SLAB 4.0 Alu1, th. 60 mm - glued (pos. 7) and fixed with screws to the wall construction
- 11 Insulating collar of the damper and duct connection - ISOVER Ultimate Protect SLAB 4.0 Alu1, th. 60 mm
- 12 L-profile 30x30x3 mm - dimensions and installation acc. to ISOVER manufacturer
- 13 Stud-welded pins 60 mm - quantity and placing acc. to ISOVER manufa.
- 14 Stud-welded pins 120 mm - quantity and placing acc. to ISOVER manufa.
- 15 Stud-welded pins 180 mm - quantity and placing acc. to ISOVER manufa.
- 16 Fire spiral shaped screws - quantity and placing acc. to ISOVER manufa.
- 17 Steel clamp min. M8 bolts
- 18 ISOVER Protect BSF
- 19 VRM2-B

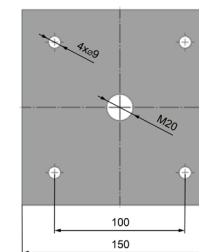
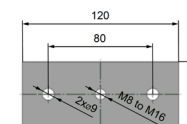


- Position:
- 1 FDMB
 - 2 Threaded rod M8 - M20
 - 3 Support HILTI (MQ-41 = <100kg) or (MQ-41/3 = >100kg)
 - 4 Bored plate HILTI MQZ-L
 - 5 Washer for M8 - M20
 - 6 Nut M8 - M20

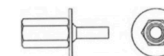
Advice provided by a fixing specialist contractor takes precedence.



Hinge plates



Screw with internal thread and hexagon drive



Load capacities of threaded hanger rods F [N] at the required fire resistance 90 minutes

Size	As [mm]	Weight G [kg]	
		for 1 piece	for 1 pair
M8	36,6	22	44
M10	58	35	70
M12	84,3	52	104
M14	115	70	140
M16	157	96	192
M18	192	117	234
M20	245	150	300

Position:

- 1 Threaded rod M8 - M20
- 2 Nut
- 3 Washer
- 4 Coupling nut
- 5 Anchor
- 6 Hinge plate - min. thickness 10mm
- 7 Concrete screw tested for fire resistance R30-R90, max. tension up to 0.75KN (length 35mm)

Drop rod diameter is based on damper weight, see full Damper TPM for further technical details or contact help@Mandik.co.uk. Mandik reserves the right to update this information without prior notice.

	Mandik UK Ltd www.mandik.co.uk Office: 0117 4526376	Redwood House Brotherswood Court Great Park Road Almondsbury Bristol BS32 4QW
	Title: FDMB - Remote solid wall Classification: EI 90 (ve i<->o) S Drawing No: 0000-0000-150 Rev 1	
UKCA certified acc. to EN 15650 Tested in accordance with EN 1366-2		Size: (min-max) 100x100 - 1000x500 up to 0.5m ² Date: 21/06/2023 Illustrated: AA Approved: MF
Intellectual property of MANDIK Ltd. Unauthorised use shall be punishable by law		